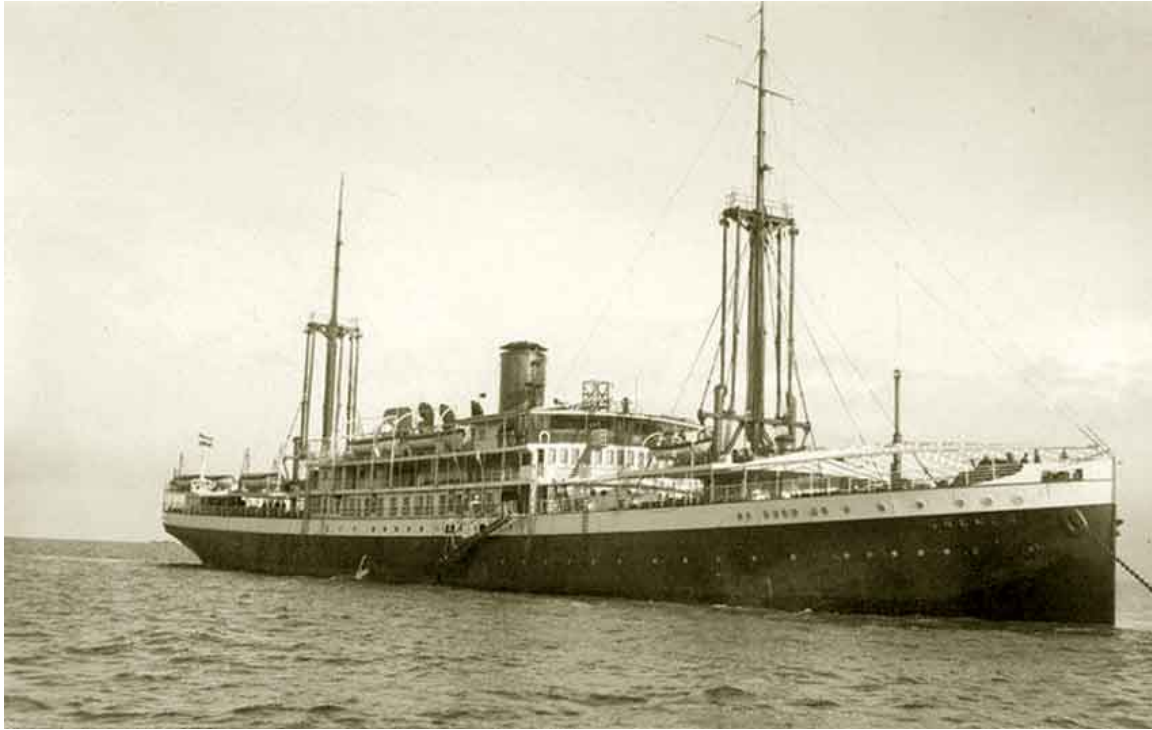


## SS Cremer



The *MV Cremer* (4608 tons), a former Dutch island trader. This was an oldish style mixed and passenger ship manned by Dutch officers and Indonesian seamen, which used to trade out of Batavia (now Djakarta) to Singapore, Brunei, Manila and other Asian ports. The ship had been converted to carry troops as well as cargo. The fore holds were used to carry the troops: rough triple bunks fashioned out of timber had been installed on two tween deck levels and the bottom level, which was accessible to the tween decks above and the top deck by wooden staircase steps.